

310,000 SQFT SOLID DOSE PHARMACEUTICAL MANUFACTURING PLANT

ORAL SOLID DOSE
SEMI SOLIDS
BOTTLES
BLISTER
TUBES
R&D LABORATORIES



Self-Sufficient Facility with Strong Quality Track Record

Quality Assurance:

- Independent reporting system for production and Quality system
- On-site deviation/CAPA, stability and complaint management

Quality Control:

- Chemical and Microbiology testing

Equipped for High Volume Oral and Semi Solid Products

Granulation: 5 Granulation rooms with

- 3 High Shear granulators
- 1 fluid bed granulator
- 3 Fluid bed dryer
- 1 low shear mixer

Blending/Mixing: Batch sizes from 50kg to 1500kg

- 1 Bin blender (capacity - 500kg)
- 1 V-blender (capacity - 1500kg)
- Jacketed and non-jacketed vessels for semi-solids

Coating and Tableting:

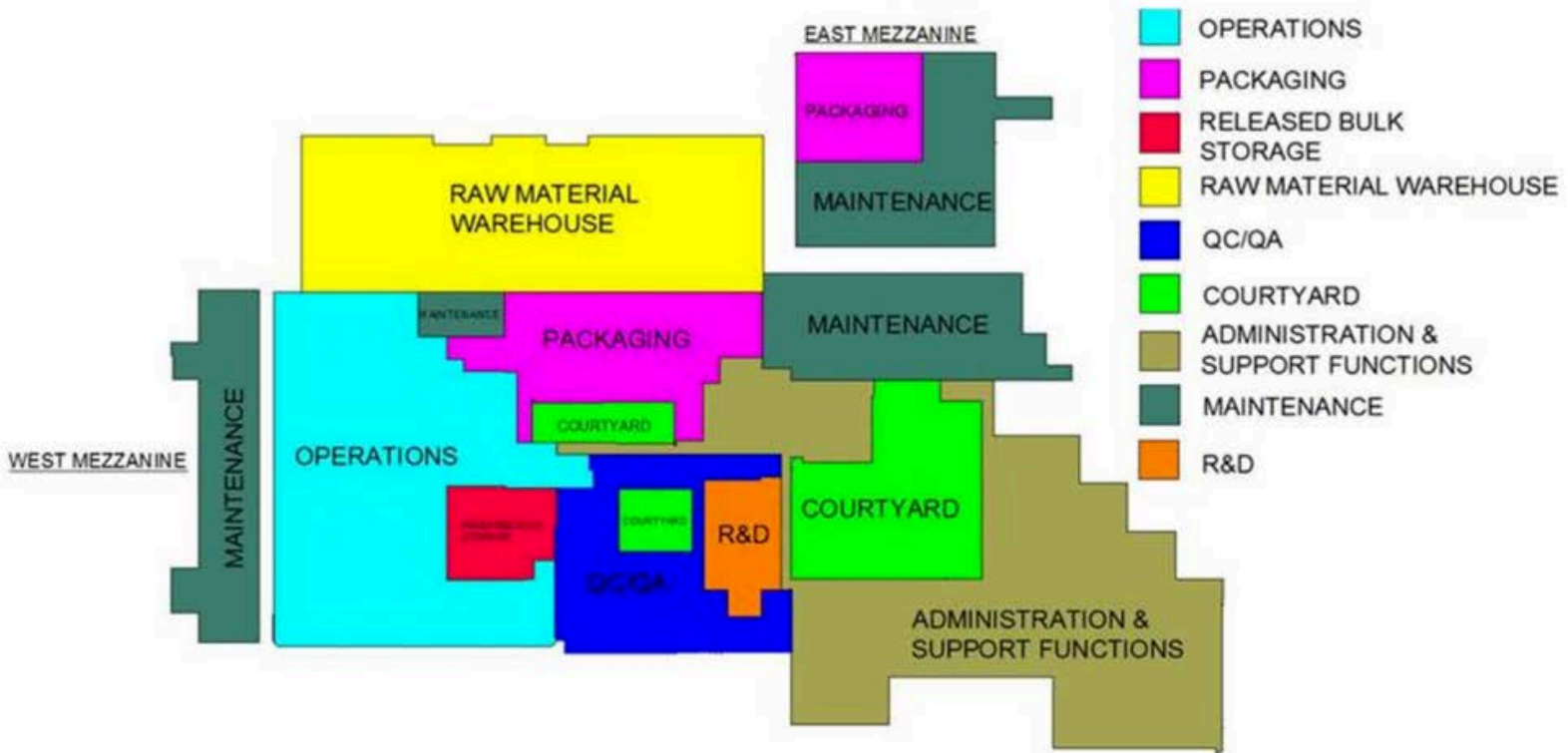
- 6 Coating machines (aqueous & solvent coating capability)
- 7 Tablet compression machines

Packaging:

- 3 Bottle filling lines (1 equipped with tamper evident packaging for OTC)
- 1 Jar filling line (semi-solid)
- 1 Tube filling line (semi solid)



SITE LAYOUT



KEY EQUIPMENTS AT SITE AND CAPACITY



| Type | Work Center | Major Equipment | Capacity / Batch Size |
|-----------------|------------------------------|---|---|
| Dispensing | Dispensing 1, 2 & 3 | Scales, Dispensing Work Stations | - |
| Wet Granulation | Granulation 2 | Glatt 2800 Liters FBP (Top Spray), Screw feeder. Binder preparation tanks 600Lits -2 Nos | 2800 Liters, Upto 980kg |
| | Granulation 3 | MGT High Shear Granulator, GEA Aeromatic T6 Dryer, Jackson Crockett Oscillating Mill, Fitz Mill | RMG - 400 Liters FBD - 800 Liters |
| | Granulation 4 | Diosna P-1000 High Shear Granulator, GEA Aeromatic T8 Dryer, Jackson Crockett Oscillating Mill, Fitz Mill | RMG - 1000 Liters FBD - 1800 Liters |
| | Granulation 5 | Sigma Mixer, Jackson Crockett Mill, Fitz Mill | Sigma Mixer ~ 2000 Lit |
| | C-II Granulation | Diosna P-100, Glatt GFB Pro 30, Quadro Comil U20, Jackson Crockett Mill | RMG - 100 Liters FBD - 360 Liters |
| Blenders | Bin Blending | BULS Bin Blender | 1200 Liters Bins |
| | V-Blender | Peterson Kelly PK-100 V Blender | 2831 Liters |
| | C-Blender | Glatt CM400 Bin Blender | 50 Liters to 400 Liters |
| Compression | Fette 9, 10, 11 & 12 (4 No.) | Fette 3090i double rotary "B" tooling, "D" tooling | Up to 870,000 TPH for B Tooling and 470,000 TPH for D tooling |
| | Fette 14 | Fette 3200i double rotary "B" tooling, "D" tooling | Up to 870,000 TPH for B Tooling and 470,000 TPH for D tooling |
| | Fette 15 | Fette 1200i compression machine | Upto 172,000 TPH |
| | C-II Korsch | Korsch TRP 700 (tri-Layer tablet press) | Upto 321,000 TPH |
| Capsule | C-II Encapsulation | MG2 Planeta Multi Net | Upto 100,000 capsules per hour |

| Type | Work Center | Major Equipment | Capacity / Batch Size |
|-----------|---------------------|--|---|
| Laser | Laser Drill | Ackley Laser Drill | Upto 30,000 tablet per hours |
| Coating | Fast Coater 60" | 60" Ohara Fast Coater - 2 coaters in one room (deep pan) | 320kg to 450kg |
| | Accelacota 60" | 60" Accelacota - 2 coaters in one room | 320kg to 360kg |
| | Accelacota 66" | 66" Accelacota - 1 No | 400kg to 450kg |
| | Accelacota 70" | 70" Ohara Fast Coater | 450kg to 500kg |
| | C-II Coater | Ohara FC200 | 40kg to 85kg |
| Wursters | Wurster -1 | Glatt 60 | 162 Liters Working capacity - 2 Wursters column 24" |
| | Wurster -2 | Glatt 120 | 384 Liters Working capacity 3 Wurster column 36" |
| Printer | Ackley Printer 1 | Ackley printer (Slat type) | - |
| | Ackley Printer 2 | Ackley printer (Slat type) | - |
| Cream | Cream Manufacturing | 5600 Liters Wax Preparation 2500 Liters Final Mixing tank | - |
| Packaging | Line 1 | Jar Packaging Line - serialized | Upto 120 Jars per minute (depends on the fill weight) |
| | Line 2 & 3 (2 No.) | Bottle Packaging Line - serialized | Upto 120 bottles per minute |
| | Line 4 | Tube filling line - serialized | 1400 tubes per hour |
| | Line 5 | OTC Bottle Packaging Line - Non serialized | Upto 120 bottles per minute |
| | Bulk Packaging | Bulk Packaging - Serialized | - |

EQUIPMENT PHOTOS

